






Eco Throne Installation Manual


1 Cautions for safety *(Please observe the following)*

**The following symbols are used to indicate important safety instructions for the use of the product.

 Danger	Indicates an imminently hazardous situation which, if not avoided, will result in death or serious injury.
 Warning	Indicates dangerous situations where the user could suffer death or serious injury if this product is used incorrectly.
 Do not dismantle	Indicates not to dismantle this product.
 Observe strictly	Indicates to observe the following precaution before using this product.

 **Attention**

 **Prohibited** Do not step on the seat cover, seat, main body or place heavy objects on it.

 **Observe strictly** Use only specified materials for installation.

2 Cautions before installation

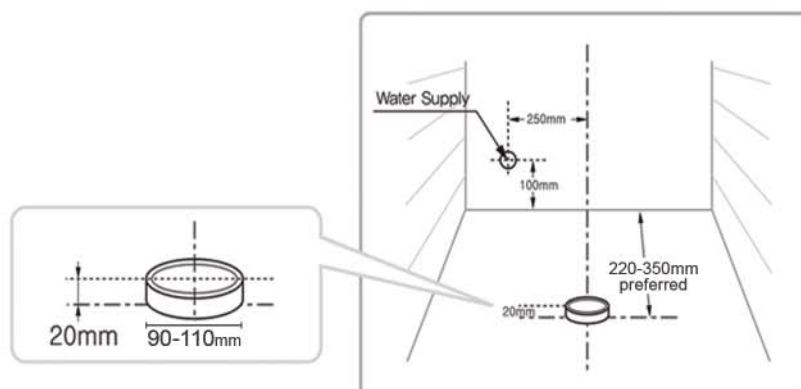
a Space

When installing the Bidet, make sure that there is enough space to open the bathroom door.

Water outlet should at least be 100mm above the floor level.

Water supply can be placed directly behind the toilet if toilet is placed far enough forward.

If the toilet is placed very close to the wall then the water supply should be positioned to one side (as in the diagram).



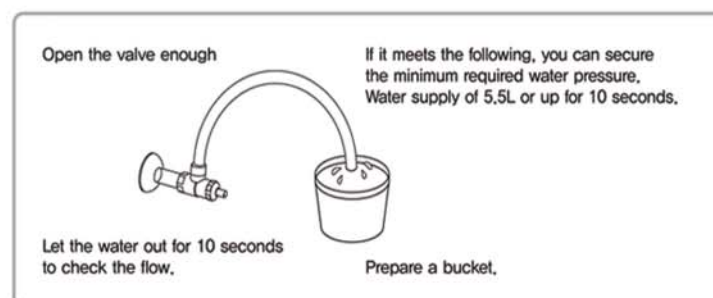
b Water Pressure

The product requires a minimum pressure of 150 KPA (1.5 kgf/cm²).

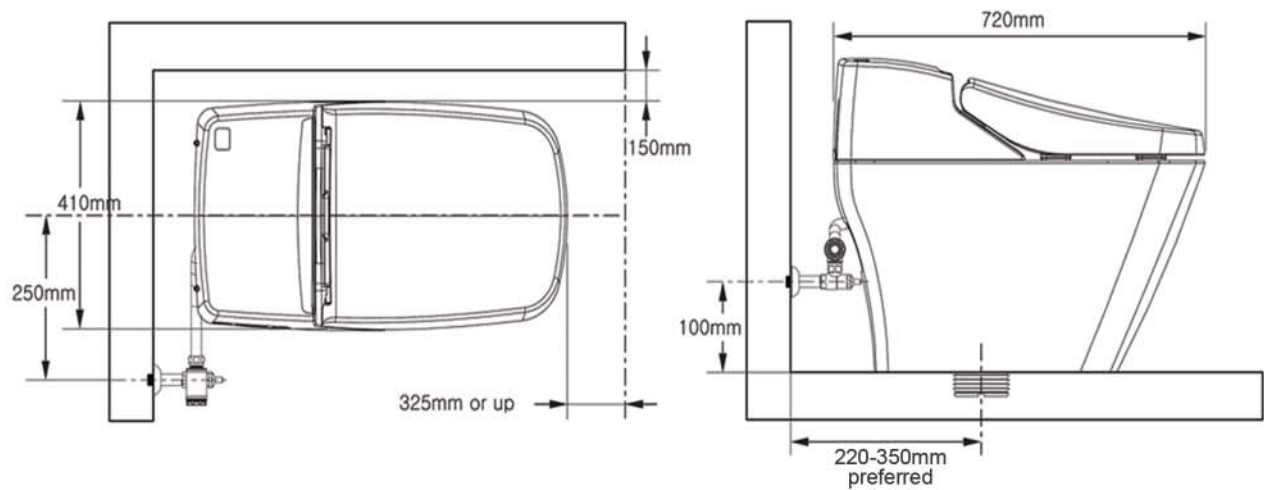
The maximum pressure of 736 KPA (7.5 kgf/cm²)

How to check minimum water pressure

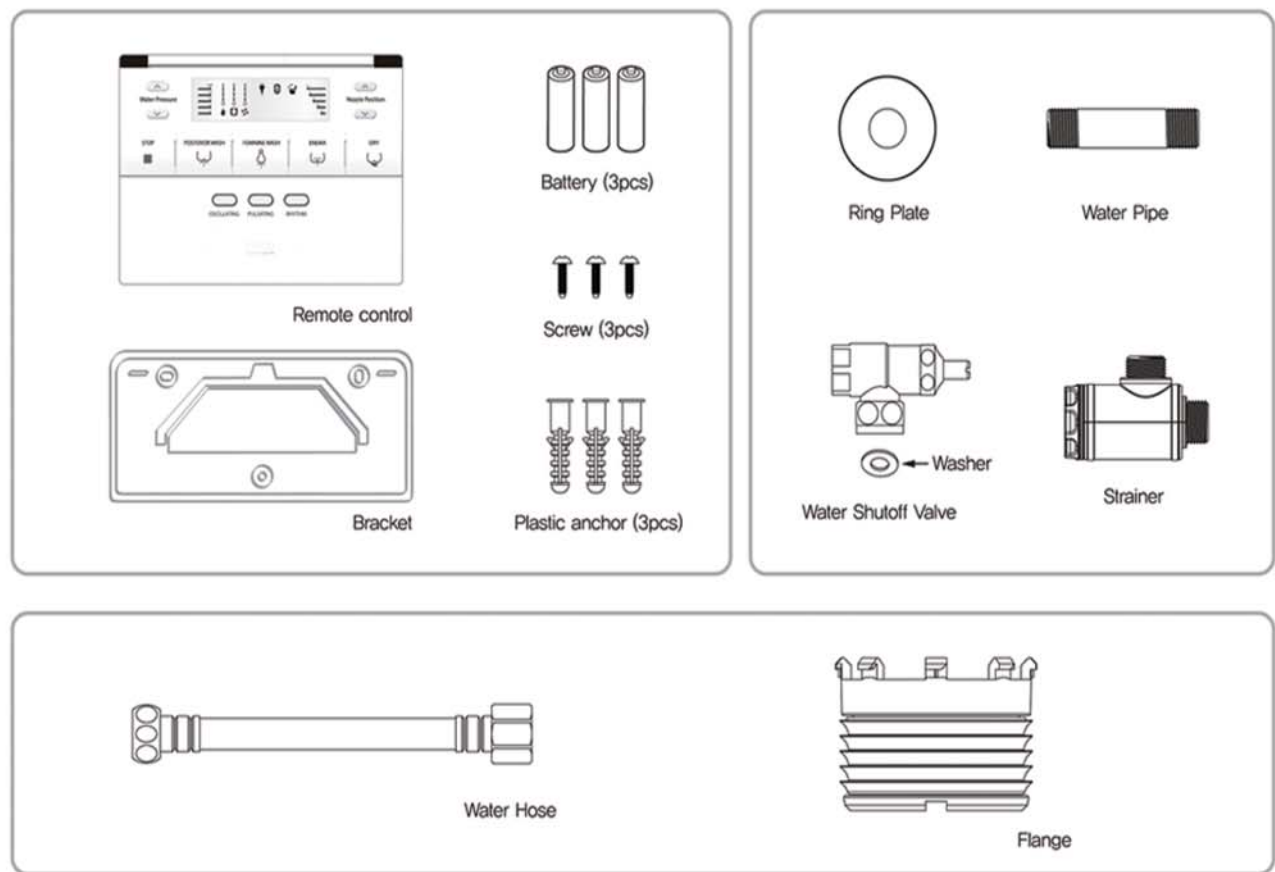
If you do not have the pressure meter, check the pressure as on the right.



3 Drawing for Installation



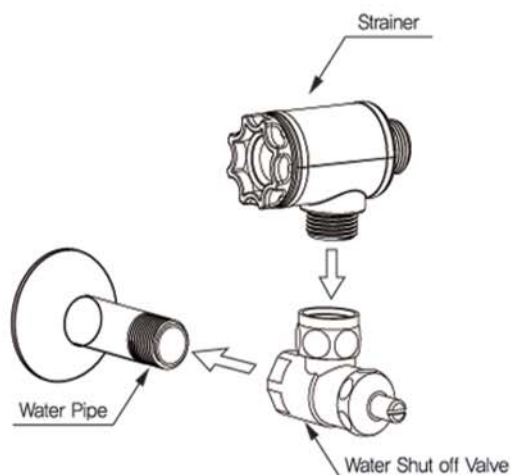
4 Drawing for Installation



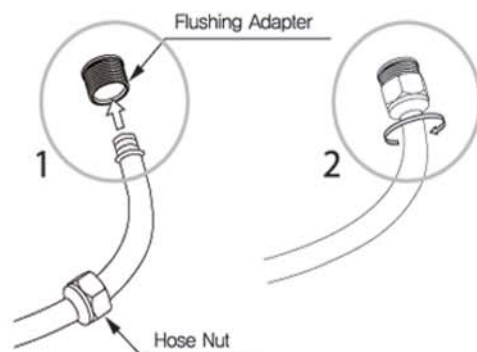
5 Installation

① Install Shutoff Valve

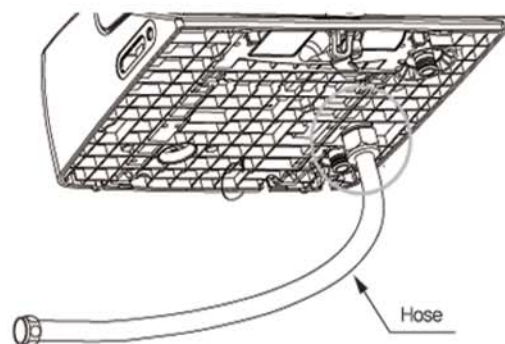
1. Close the main water supply.
2. Remove existing stop-cock.
3. Wind Teflon tape around water pipe.
4. Insert OR Screw 'on' pressure reducer.
5. Connect the shut off valve.
6. Connect the strainer.



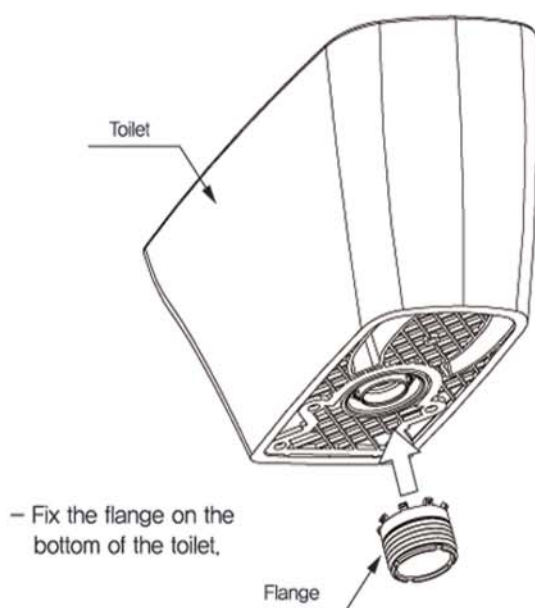
② Connect Hose



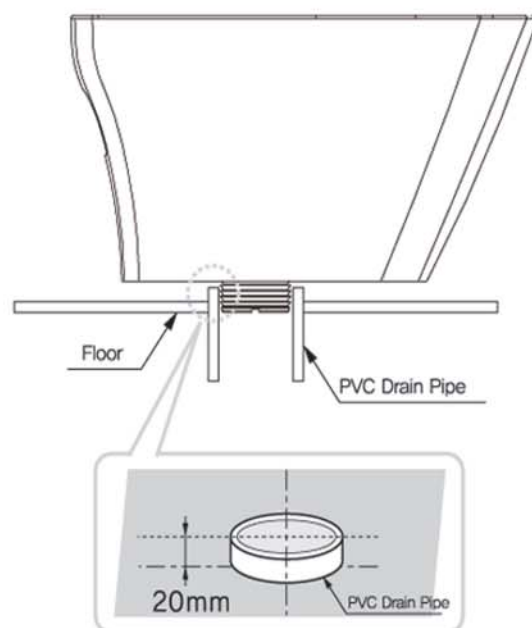
1. Fix the hose to the flushing adapter first,
2. Turn the nut clockwise to connect the hose.



③ Connect Flange



④ Connect Drain Pipe






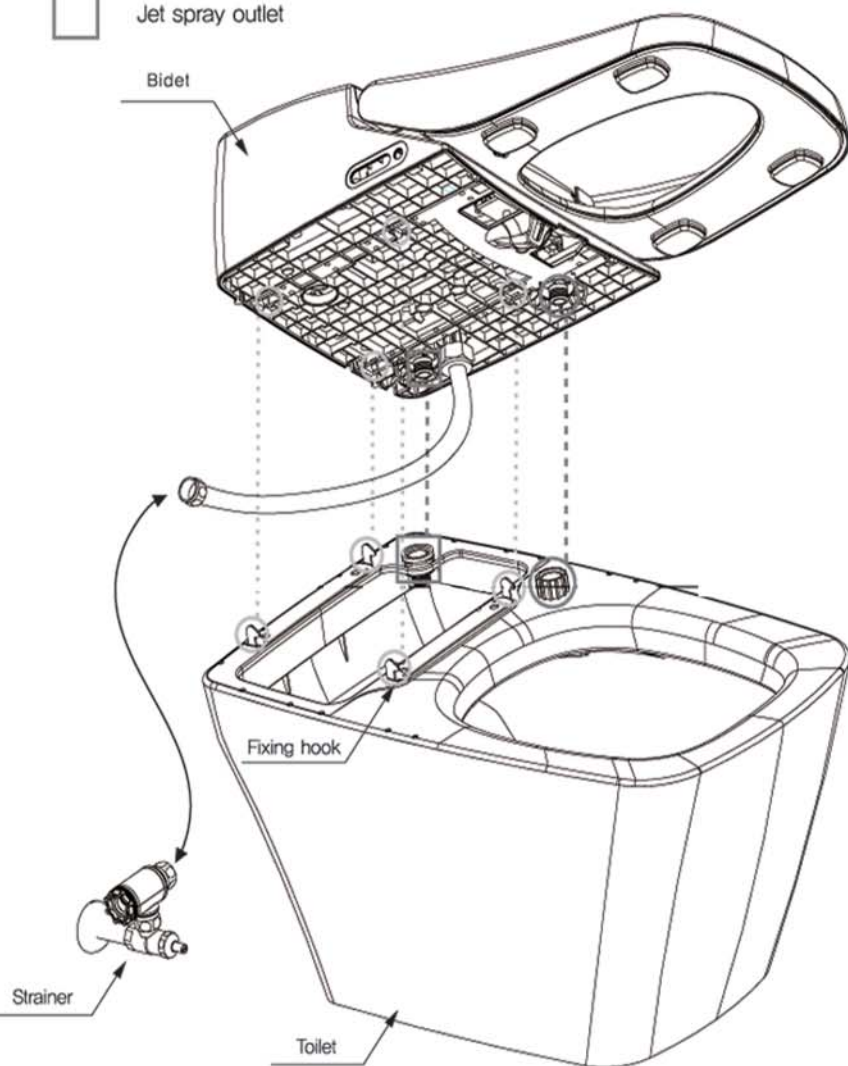
- Make sure the PVC drain pipe is 20mm high from the floor and flat.
- Connect the toilet with flange to the PVC drain pipe on the floor.

※ Put enough soap water around the flange before connecting.

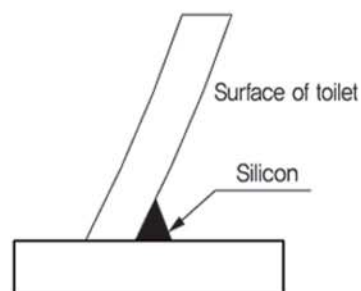
5 Connect Bidet to Toilet

1. Assemble the toilet with bidet, jet spray outlet and bowl washing outlet.
2. Insert the hose into the filter.
3. Insert bidet's fixing hook onto the toilet's fixing hook until it "clicks".

-  Fixing hook
-  Bowl washing outlet
-  Jet spray outlet



6 Apply Silicon



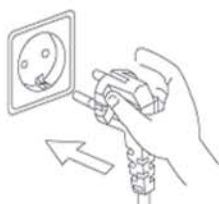
Water may get into the part between the lower end of the toilet and the floor, and leave stain. Apply silicon to prevent water penetration.

7 Open the Shutoff Valve

Open the shutoff valve.
- Turn it counterclockwise.

8 Connect Power

1. Insert the power plug into the outlet.
 2. Press the Full flush button on the top of remote control.
- Water will fill the ceramic bowl.



※ The water may overflow out of the rim when cleaning the bowl in the region with high water pressure.

Using a screwdriver, turn the shutoff valve clockwise to reduce the water pressure.

